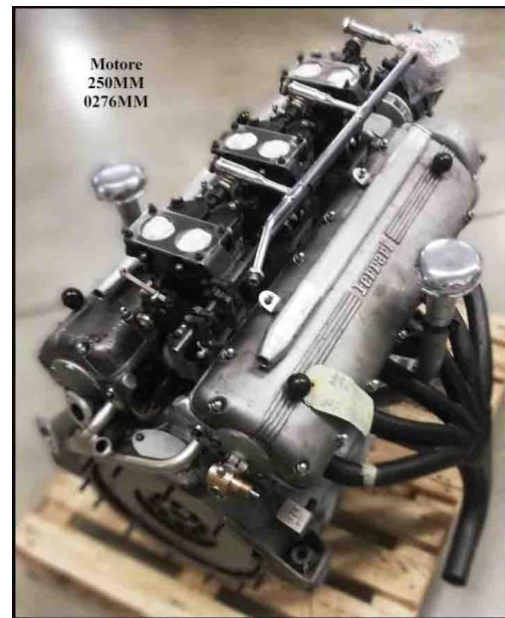


Ferrari 250MM

Project Cost Projection



1. Original motor number 0276MM, rebuilt by Ferrari craftsmen in Italy. 420,000 euro



Original body from another 250MM PF Coupe.180,000 euro ...OR.....

A new body can be made for a lot less!

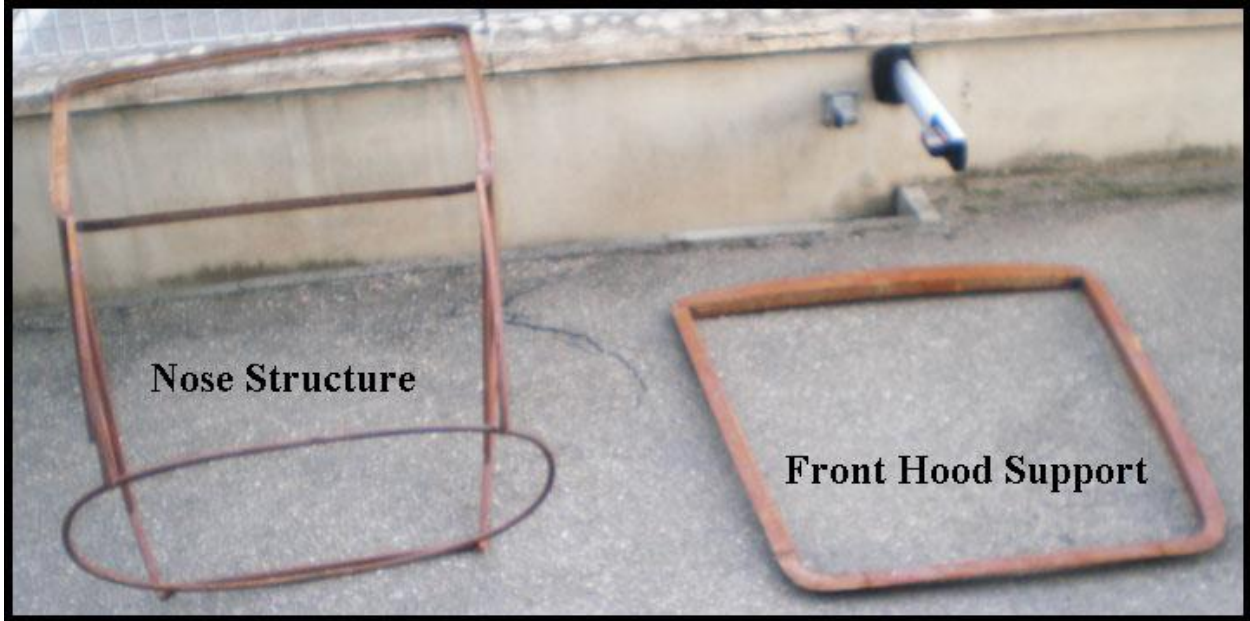


2. GILCO built chassis 60,000 euro
(GILCO built the original chassis)
3. Correct new wheels (5) \$12800
4. Wheel Hubs \$1800
5. Knockoffs \$1012
6. Transmission 78,000 euro
7. Differential and suspension 95,000 euros
8. Brakes Front and rear 42,000 euro

9. Marchal headlights, buckets and outer rings. \$6900
10. Taillight assemblies, pr. \$1600
11. License plate light/s, pair \$376
12. Front turn signal assemblies, pair \$440
13. Front grille \$11,400
14. Instruments OEM craftsman \$9900
15. Dashboard- May not be needed
16. Steering wheel, hub and horn button as original \$4800
17. Steering box \$8800 as original
18. Radiator and mufflers \$14,000
19. Inner and outer door handles and door mechanisms \$3600
20. Window winder handles and bezels unless sliding windows are preferred \$380
21. Bucket seat as original. Price dependent on selected covers. Blue canvas, vinyl or leather. \$7200 - \$8400

22. Floor covering. Carpet, vintage rubber mats or vinyl. Exact price dependent on selection. \$480-\$1800
23. Headliner material \$144
24. Ignition switch, original style \$780
25. Turn signal switch, original style \$970
26. Dash switches. \$660
27. Taillight relay, a special style by Carello able to have running lights and turn singles off a single bulb taillight. That is the style on the original body. \$720
28. Wiring harness with fuse boxes \$5800
29. Aluminum gas tank as per the original. 12,000 euros
30. Labor :
31. A. Repair body, put into condition ready for paint.
B. Make a substructure to mount body to chassis. OR use the original substructure located and retrieved on loan 25 Oct. 2022





C. Make substructure for hood and trunk skin.

D. Make a new grille

E. Make a new set of correct gauges

F. Make correct seats, carpet or rubber mats, headliner and door panels.

G. Make or repair dashboard

H. Make new windshield and back glass

I. Make side glass

J. Tires.

K. Assembly of all components including brakes, chroming of things needing chrome, assembly.

L. Paint the entire car

TOTAL OF ALL ITEMS LISTED BETWEEN ITEMS A AND L PLUS ITEMS NOT LISTED TO BE ABLE TO DELIVER A FINISHED “WORK OF ART” TO BE CALCULATED DEPENDING ON CHOICES MADE.



www.reoriginals.com /

matteo@reoriginals.com

3034 East FM 1988, Goodrich, Texas 77335

Tel 832-632-9295